

General Arrangement Drawing Catalog

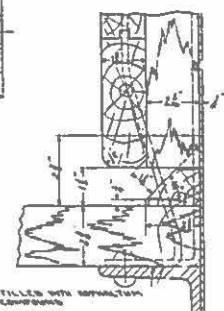
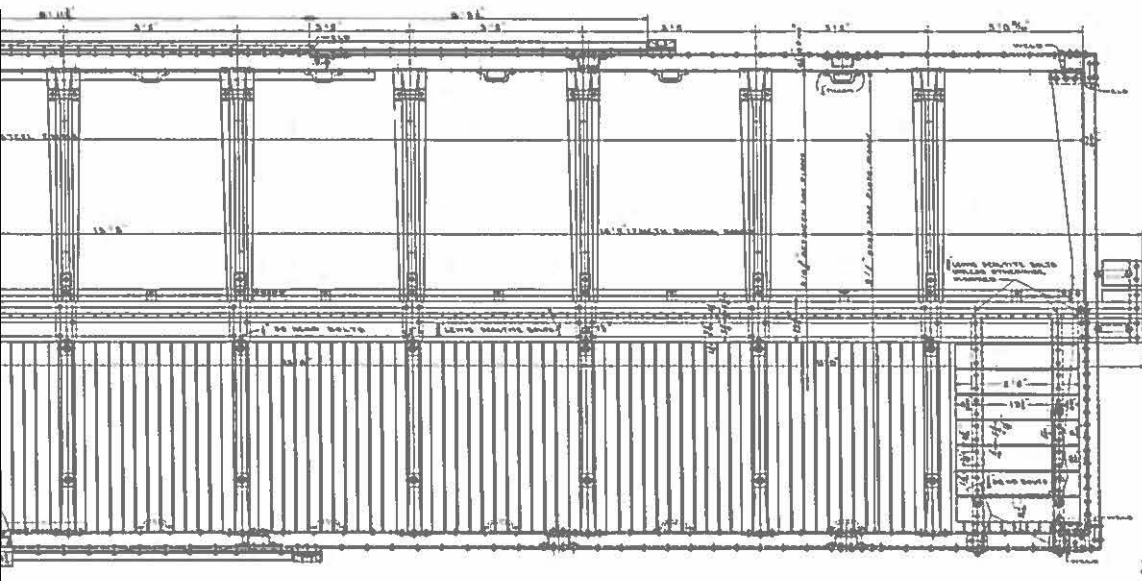
This catalog consists of a listing of official C&O mechanical drawings of the “General Arrangement” type, arranged by car of equipment type and number. These drawings generally measure about 4 feet by 3 feet in size and show the design of the equipment being treated in rivet-by-rivet detail, with dimensions and sizes. They are the equivalent for cars of the “Erecting Card” drawings for locomotives. They were used by shop forces to build, rebuild, or repair the cars, and should be ideal for the detailed modeler. We have already supplied many of these top model makers.

The collection of about 300 drawings in this catalog comprises many of the car types and series operational on the C&O from about 1930 to the early 1970s, so should fit nicely with the interest period of most people.

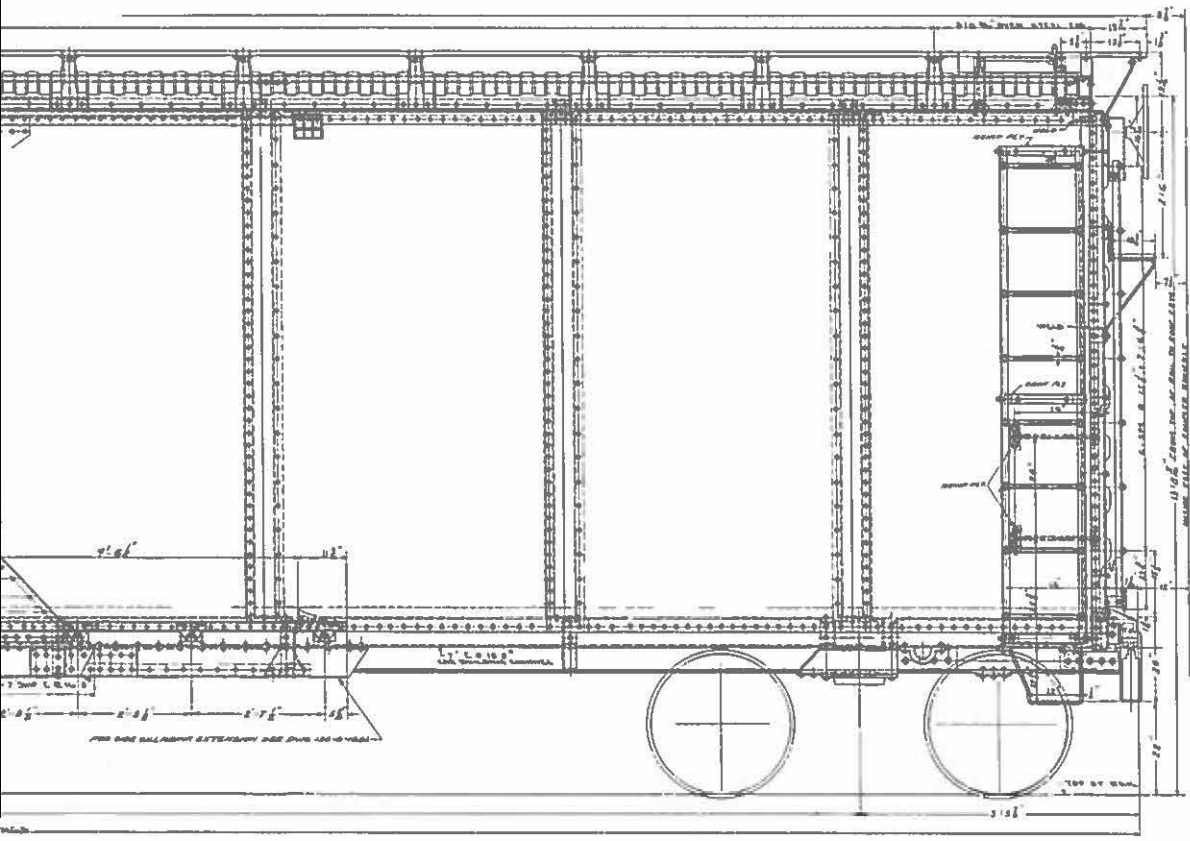
The drawings are available as digital downloads for \$8.95 each, or as full-size (approximately 36 inches by 48 inches) paper prints for \$15.95 plus shipping cost. The prints will be folded to 8x10 size unless you want them rolled, in which case additional cost will be charged for a shipping tube. **In each case, telephone 540-862-2210 and inquire as to exact costs, and to ensure availability. All orders must be placed by telephone and cannot be placed online. Office hours are weekdays 9am-4pm.**



The Chesapeake & Ohio Historical Society
312 E. Ridgeway St.
Clifton Forge, Va. 24422
540-862-2210 - www.cohs.org



TILES WITH REINFORCING
 CONCRETE



SECTION AT CORNER &
 WALKING STAIR

NO.	DESCRIPTION	DATE
1	ISSUED FOR CONSTRUCTION	1944
2	REVISION	
3	REVISION	
4	REVISION	
5	REVISION	
6	REVISION	
7	REVISION	
8	REVISION	
9	REVISION	
10	REVISION	

DWG NUMBER	DATE	REV DATE	TYPE CAR	ROAD NUMBERS	DWG TYPE	RR
139-10-254A	5/6/1937	4/19/1949	50-TON HOPPER	100- 104	GEN ARRANGEMENT	C&O
139-11-424B	6/5/1946	6/11/1952	50-TON ALUM.HOPPE	295- 299	GEN ARRANGEMENT	C&O
139-11-140A	2/23/1948	4/21/1949	50-TON HOPPER	19300- 19389	GEN ARRANGEMENT	C&O
139-11-273D	11/4/1937	2/7/1950	50-TON HOPPER	33000- 33324	GEN ARRANGEMENT	C&O
139-11-451B	3/20/1962	11/19/1958	50-TON HOPPER	47000- 48989	GEN ARRANGEMENT	C&O
139-11-613B	11/4/1958	5/15/1961	50-TON HOPPER	47000- 48989	GEN ARRANGEMENT	C&O
139-11-407D	8/14/1945	11/18/1958	50-TON HOPPER	49000- 49999	GEN ARRANGEMENT	C&O
139-11-611C	10/8/1958	5/14/1962	50-TON HOPPER	49000- 59999	GEN ARRANGEMENT	C&O
139-11-273D			50 TON HOPPER	50000- 51999		
139-11-426B	6/22/1946	2/9/1950	50-TON HOPPER	52000 -52999	GEN ARRANGEMENT	C&O
139-11-139	6/10/1918	1/24/1933	50-TON HOPPER	61500- 61999	GEN ARRANGEMENT	C&O
139-11-268B	10/19/1936	4/29/1949	50-TON HOPPER	64000- 65499	GEN ARRANGEMENT	C&O
139-11-136B	9/21/1927	5/4/1949	70-TON HOPPER	70000- 71399	GEN ARRANGEMENT	C&O
139-11-49C			70-TON HOPPER	71000- 71249	GEN ARRANGEMENT	PM
139-11-32C	12/26/1930	5/5/1949	70-TON HOPPER	71500- 72959	GEN ARRANGEMENT	C&O
139-11-643C	9/18/1961	3/5/1964	70-TON HOPPER	73000- 74680	GEN ARRANGEMENT	C&O
139-11-644	9/22/1961	6/20/1962	70-TON HOPPER	75500- 78999	GEN ARRANGEMENT	C&O
139-11-531	12/3/1951		70-TON HOPPER	79000- 79999	GEN ARRANGEMENT	C&O
139-11-648A	12/12/1961	6/13/1962	85 TON HOPPER	85000- 86999	GEN ARRANGEMENT	C&O
139-11-691	2/11/1965		WOOD CHIP HOPPER	85000- 86999	GEN ARRANGEMENT	C&O
139-11-507	1/11/1950		70-TON HOPPER	98000- 98999	GEN ARRANGEMENT	C&O
139-11-506B	1/11/1950	6/20/1957	70-TON HOPPER	99000- 99499	GEN ARRANGEMENT	C&O
139-11-525B	9/18/1951	6/25/1957	70-TON HOPPER	105000-105099	GEN ARRANGEMENT	C&O
139-11-526B	9/16/1951	6/27/1957	70- TON HOPPER	105100-105999	GEN ARRANGEMENT	C&O
139-11-141	1/18/1933	3/17/1938	HOPPER	110000-115499	GEN ARRANGEMENT	C&O
139-11-294C	12/23/1937	4/29/1949	50-TON HOPPER	110000-115499	GEN ARRANGEMENT	C&O
139-10-137A	1/10/1929	10/4/1955	50-TON HOPPER	116000-117999	GEN ARRANGEMENT	C&O
139-10-563B	11/16/1953	10/4/1955	50-TON HOPPER	116000-117999	GEN ARRANGEMENT	C&O
139-11-651	4/9/1962		50-TON HOPPER	118000-123999	GEN ARRANGEMENT	C&O
139-11-650A	3/20/1962	6/18/1964	50 -TON HOPPER	124000-128999	GEN ARRANGEMENT	C&O
139-11-259B	11/25/1936	2/9/1950	50-TON HOPPER	129000-132499	GEN ARRANGEMENT	C&O
139-11-237D	11/4/1937	2/7/1950	50-TON HOPPER	132500-132899	GEN ARRANGEMENT	C&O
139-11-273D			50-TON HOPPER	134000-135499		
139-11-735	4/10/1967		60-TON HOPPER	136800-137999	GEN ARRANGEMENT	C&O
139-11-202D	1/12/1935	1/23/1962	50-TON HOPPER	138000-123999	GEN ARRANGEMENT	C&O
139-11-753	4/22/1968		650-TON HOPPER	138000-138674	GEN ARRANGEMENT	C&O
139-11-686C	10/16/1964	5/2/1966	80-TON HOPPER	144000	GEN ARRANGEMENT	C&O
139-11-702	10/7/1965		70-TON HOPPER	150000-151499	GEN ARRANGEMENT	C&O
139-11-671C	10/9/1963	3/12/1963	70-TON HOPPER	152000-153999	GEN ARRANGEMENT	C&O
139-11-214A	7/5/1935	5/6/1949	70-TON HOPPER	173000-176999	GEN ARRANGEMENT	C&O
139-11-684A	8/21/1964	6/22/1965	50- TON HOPPER	300010	GEN ARRANGEMENT	C&O
139-11-797E			50 TO HOPPER	300900-300924		
139-11-666	8/27/1963		50-TON HOPPER	318000-318999	GEN ARRANGEMENT	C&O
139-11-677A	4/10/1964	2/23/1965	60-TON HOPPER	324000-325499	GEN ARRANGEMENT	C&O
139-11-692	2/17/1965		60-TON HOPPER	325500-326999	GEN ARRANGEMENT	C&O
139-11-690	1/4/1965		60-TON HOPPER	336000-336749	GEN ARRANGEMENT	C&O
139-11-658A	4/1/1963	3/12/1964	50-TON HOPPER	347000-348989	GEN ARRANGEMENT	C&O
139-11-688A	12/8/1964	6/9/1965	80-TON HOPPER	373000-373239	GEN ARRANGEMENT	C&O
139-11-663A	3/17/1964	11/17/1964	80-TON HOPPER	379000-379949	GEN ARRANGEMENT	C&O

DWG NUMBER	DATE	REV DATE	TYPE CAR	ROAD NUMBERS	DWG TYPE	RR
139-11-151A	4/13/1933	10/27/1938	40-FT BOX CAR	600- 1599	GEN ARRANGEMENT	C&O
139-11-793	4/22/1970		50-TON BOX	2290- 2999	GEN ARRANGEMENT	C&O
139-11-475A			50-TON BOX CAR	2810- 2821		
139-11-415G	2/12/1946	5/24/1955	50-TON BOX CAR	2900- 2909	GEN ARRANGEMENT	C&O
135-11-646	4/16/1970		50-TON BOX CAR	2990- 2999	END ARRANGEMENT	C&O
133-11-179	4/23/1970		50-TON BOX	2990- 2999	GEN ARRANGEMENT	C&O
139-11-352B	4/15/1942	7/5/1957	50-TON BOX CAR	3000- 3899	GEN ARRANGEMENT	C&O
139-11-272A	7/31/1937	5/4/1955	50-TON BOX CAR	4000- 4499	GEN ARRANGEMENT	C&O
139-11-271A	7/31/1937	5/3/1955	50-TON BOX CAR	4800- 4999	GEN ARRANGEMENT	C&O
139-11-282A	11/5/1937	6/10/1955	50-TON BOX CAR	5000- 5499	GEN ARRANGEMENT	C&O
139-11-634A	8/30/1960	11/27/1962	70-TON INSUL.BOX	5500- 5649	GEN ARRANGEMENT	C&O
139-11-491	2/9/1949		50-TON AUTO BOX	6050- 6249	GEN ARRANGEMENT	C&O
135-11-380	2/3/1950		50 TON BOX CAR	6050- 6249	END ARRANGEMENT	C&O
139-11-287d	11/16/1937	6/24/1957	50-TON BOX	6250- 6399	GEN ARRANGEMENT	C&O
139-11-234B	1/20/1936	1/22/1958	50-TON BOX CAR	6400- 6499	GEN ARRANGEMENT	C&O
139-11-207A	12/19/1934	5/18/1958	50-TON BOX	6500- 6549	GEN ARRANGEMENT	C&O
139-11-218A	4/30/1935	2/1/1945	50-TON FURN BOX CA	6700- 6789	GEN ARRANGEMENT	C&O
139-11-219B	4/30/1935	2/2/1945	50-TON FURN.BOX CA	6790- 6799	GEN ARRANGEMENT	C&O
139-11-360B	9/6/1942	7/9/1956	50-TON BOX CAR	6800- 6899	GEN ARRANGEMENT	C&O
139-11-209D	12/19/1934	5/5/1955	50-TON BOX CAR	7000- 7649	GEN ARRANGEMENT	C&O
139-11-616b	3/11/1959	5/25/1961	50-TON INSUL BOX	7650- 7699	GEN ARRANGEMENT	C&O
139-11-622B	9/18/1959	5/23/1961	70 TON INSUL. BOX	7750- 77792	GEN ARRANGEMENT	C&O
139-11-622B	9/18/1959	5/23/1961	70 TON INSUL BOX	7776- 7778	GEN ARRANGEMENT	C&O
139-11-622B	9/18/1959	5/23/1961	50-TON INSUL BOX	7797- 7819	GEN ARRANGEMENT	C&O
139-11-24A	10/12/1959	5/22/1961	50-TON INSUL.BOX	7820- 7824	GEN ARRANGEMENT	C&O
139-11-633A	3/23/1960	3/3/1961	50-TON INSUL.BOX	7825- 7924	GEN ARRANGEMENT	C&O
139-11-31G	12/19/1930	4/25/1955	50-TON BOX CAR	8000- 9499	GEN ARRANGEMENT	C&O
139-11-275D			40-TON BOX CAR	9300- 93499	GEN ARRANGEMENT	C&O
139-11-47E	2/27/1931	4/27/1955	50-TON BOX	9500- 9999	GEN ARRANGEMENT	C&O
139-11-503B	7/7/1949	5/5/1955	50-TON BOX	14000- 14989	GEN ARRANGEMENT	C&O
139-11-475A	7/21/1958	5/6/1955	50-TON BOX	15000- 15999	GEN ARRANGEMENT	C&O
139-11-530B	11/29/1931	5/6/1955	50-TON BOX	16000- 16999	GEN ARRANGEMENT	C&O
139-11-538B	2/20/1952	5/8/1955	50-TON BOX	17000- 17999	GEN ARRANGEMENT	C&O
135-11-415A	11/8/1954	5/9/1955	50-TON BOX	18000- 18999	END ARRANGEMENT	C&O
139-11-569A	9/20/1954	5/9/1955	50-TON BOX	18000- 18999	GEN ARRANGEMENT	C&O
139-11-817	11/3/1972		50-TON BOX	19500- 19749	GEN ARRANGEMENT	C&O
139-11-818	11/8/1972		50-TON BOX	19750- 19999	GEN ARRANGEMENT	C&O
139-11-784	2/23/1970		50-TON BOX	21000- 21499	GEN ARRANGEMENT	C&O
139-11-653	7/16/1962		50-TON BOX	21500- 21899	GEN ARRANGEMENT	C&O
139-11-777	11/25/1969		50-TON BOX	22000- 22249	GEN ARRANGEMENT	C&O
139-11-637B	1/19/1961	10/9/1968	70-TON BOX	22440- 22449	GEN ARRANGEMENT	C&O
139-11-679	4/22/1964		70-TON BOX	22450- 22549	GEN ARRANGEMENT	C&O
139-11-683A	8/14/1964	5/7/1965	70-TON INSUL BOX	22650- 22849	GEN ARRANGEMENT	C&O
139-11-665	8/8/1963		50-TON BOX	24000- 24099	GEN ARRANGEMENT	C&O
139-11-670A	9/24/1963	10/23/1970	50-TON BOX	24100- 24149	GEN ARRANGEMENT	C&O
139-11-798	10/26/1970		50-TON BOX	24150- 24199	GEN ARRANGEMENT	C&O
139-11-673	11/22/1963		50-TON BOX	24200- 24299	GEN ARRANGEMENT	C&O
135-11-426B	5/11/1955	2/9/1967	50-TON BOX CAR	24300- 24599	END ARRANGEMENT	C&O
139-11-723	9/16/1966		70-TON BOX CAR	26500- 26999	GEN ARRANGEMENT	C&O
139-11-573A	2/14/1955	5/10/1955	50-TON BOX	27000- 27749	GEN ARRANGEMENT	C&O
135-11-426B	5/11/1955	2/9/1967	50-TON BOX CAR	27000- 27749	END ARRANGEMENT	C&O

DWG NUMBER	DATE	REV DATE	TYPE CAR	ROAD NUMBERS	DWG TYPE	RR
139-11-360B			50-TON BOX CAR	27200- 27224	GEN ARRANGEMENT	C&O
139-11-584	5/28/1956		50-TON BOX CAR	28000- 28249	GEN ARRANGEMENT	C&O
139-11-590	10/20/1955		50-TON BOX	28250- 28999	GEN ARRANGEMENT	C&O
135-11-426B	5/11/1955	2/9/1967	50-TON BOX CAR	29300- 29399	END ARRANGEMENT	C&O
139-11-108	1/27/1932		BOX CAR	70000- 70999	GEN ARRANGEMENT	C&O
139-11-299C	4/16/1938	2/21/1956	40-TON BOX CAR	71250- 71349	GEN ARRANGEMENT	PM
139-11-360B			50-TON BOX CAR	72000- 72124	GEN ARRANGEMENT	PM
139-11-361A	10/6/1942	6/8/1955	50-TON BOX CAR	72125- 72199	GEN ARRANGEMENT	PM
139-11-463	11/1/1947		50-TON BOX CAR	72200- 72399	GEN ARRANGEMENT	PM
139-11-123A	10/19/1932	12/1/1932	40-TON AUTO BOX	80000- 81999	GEN ARRANGEMENT	PM
139-11-153A	8/1/1925	10/3/1934	40-TON BOX CAR	82000- 83999	GEN ARRANGEMENT	C&O
139-11-121D	9/19/1932	2/25/1944	40-TON BOX CAR	84730- 86499	GEN ARRANGEMENT	C&O
139-11-156A	4/19/1933	2/26/1944	40-TON BOX	86500- 86999	GEN ARRANGEMENT	C&O
139-11-154	4/13/1933		VENTILATED BOX	87000- 87499	GEN ARRANGEMENT	C&O
139-11-505B	1/10/1950	6/20/1957	70-TON BOXCAR	91000- 94999	GEN ARRANGEMENT	C&O
139-11-48B	5/11/1938	6/7/1955	40-TON BOX CAR	91850- 92349	GEN ARRANGEMENT	PM
139-11-352B	4/15/1942	7/5/1957	50-TON BOX CAR	10000- 11999	GEN ARRANGEMENT	C&O
139-11-49C	2/27/1931		40-TON BOX CAR	271000-271249	GEN ARRANGEMENT	C&O
139-11-299C	4/16/1938	2/21/1956	40-TON BOX CAR	271250-271349	GEN ARRANGEMENT	C&O
139-11-361A	10/6/1942	6/8/1955	50-TON BOX CAR	272155-272199	GEN ARRANGEMENT	C&O
139-11-44E	2/14/1931	4/29/1955	50-TON BOX CAR	282000-283499	GEN ARRANGEMENT	C&O
139-11-352B	4/15/1942	7/5/1957	50-TON BOX CAR	283500-283999	GEN ARRANGEMENT	C&O
139-11-352B	4/15/1942	7/5/1957	50-TON BOX CAR	284100-284399	GEN ARRANGEMENT	C&O
139-11-48B	5/11/1938	6/7/1955	40-TON BOX CAR	291850-292349	GEN ARRANGEMENT	C&O
139-11-275D	10/7/1937	6/28/1957	40-TON BOX CAR	293000-293499	GEN ARRANGEMENT	C&O
135-11-426B	5/11/1955	2/9/1967	50-TON BOX CAR	462000-462364	END ARRANGEMENT	C&O
139-11-683A	8/14/1964	5/7/1965	70-TON INSUL BOX	475075-475134	GEN ARRANGEMENT	C&O
139-11-774D	10/8/1969	7/26/1971	70-TON BOX	479000-471999	GEN ARRANGEMENT	C&O
139-11-801	4/6/1971		70-TON HI-CUBE BOX	492000-492082	GEN ARRANGEMENT	C&O

DWG NUMBER	DATE	REV DATE	TYPE CAR	ROAD NUMBERS	DWG TYPE	RR
E-6771	3/17/1924		CABOOSE		GEN ARRANGEMENT	PM
F-6059B	7/8/1920	7/19/1923	CABOOSE		GEN ARRANGEMENT	PM
139-11-295B	2/1/1938	5/22/1946	CABOOSE	901- 925	GEN ARRANGEMENT	C&O
139-11-356B	5/20/1942	3/22/1948	40 TON CABOOSE	950- 989	GEN ARRANGEMENT	PM
139-11-356B	5/20/1942	3/22/1948	40-TON CABOOSE	950- 989	GEN ARRANGEMENT	PM
139-11-288D	12/9/1937	5/20/1948	30 TON CABOOSE	90000- 90199	GEN ARRANGEMENT	C&O
139-11-527	12/3/1951		CABOOSE	90200- 90299	GEN ARRANGEMENT	C&O
20558	7/1/1926	11/11/1930	K3-6 CABOOSE	90299- 90325	CUPOLA ARRANGEME	C&O
139-11-528	12/3/1951		CABOOSE	90300- 96349	GEN ARRANGEMENT	C&O
139-11-83	12/26/1913	5/13/1924	CABOOSE	90326- 90369	GEN ARRANGEMENT	C&O
139-11-83	12/26/1913		CABOOSE	90326- 90369	GEN ARRANGEMENT	C&O
139-11-82	12/8/1908	5/20/1924	CABOOSE	90370- 90393	GEN ARRANGEMENT	C&O
17256	2/4/1925	8/17/1925	CABOOSE	90700- 90799	CUPOLA ARRANGEME	C&O
20558	7/1/1926	11/11/1930	K3-4 CABOOSE	90800- 90899	CUPOLA ARRANGEME	C&O
20558	7/1/1926	11/11/1930	K3-5 CABOOSE	90900- 91024	CUPOLA ARRANGEME	C&O
139-8-24A	11/21/1930	8/14/1931	CABOOSE	A800-A824	INTERIOR ARRANGEM	PM

DWG NUMBER	DATE	REV DATE	TYPE CAR	ROAD NUMBERS	DWG TYPE	RR
139-11-509B	8/22/1950	2/9/1950	50-TON DRY BULK	300- 349	GEN ARRANGEMENT	C&O
139-11-274A	10/30/1937	1/25/1957	70-TON DRY BULK	400- 424	GEN ARRANGEMENT	C&O
139-11-303D	11/11/1938	12/31/1952	70-TON DRY BULK	450- 574	GEN ARRANGEMENT	C&O
139-11-446	2/13/1947		70-TON DRY BULK	600- 799	GEN ARRANGEMENT	C&O
139-11-520A	1/15/1951	3/4/1951	70 TON DRY BULK	800- 1299	GEN ARRANGEMENT	C&O
139-11-625	10/22/1959		70-TON DRY BULK	1300- 1699	GEN ARRANGEMENT	C&O
139-11-626	10/23/1959		70-TON DRY BULK	1700- 1949	GEN ARRANGEMENT	C&O
139-11-609B	12/23/1957	4/11/1961	70-TON DRY BULK	2000- 2099	GEN ARRANGEMENT	C&O
139-11-609A	12/23/1957	2/6/1957	70-TON DRY BULK	2000- 2099	GEN ARRANGEMENT	C&O
139-11-619B	6/15/1959	7/6/1960	70-TON DRY BULK	2100- 2199	GEN ARRANGEMENT	C&O
139-11-781A	1/6/1970	2/11/1981	70-TON DRY BULK	2200- 2209	GEN ARRANGEMENT	C&O
139-11-758	6/27/1968		70 TON DRY BULK	2250- 2274	GEN ARRANGEMENT	C&O
139-11-760	8/20/1968		70-TON DRY BULK	2300- 2374	GEN ARRANGEMENT	C&O
139-11-700A	10/31/1967	4/21/1970	70-TON DRY BULK	2400- 2499	GEN ARRANGEMENT	C&O
139-11-701A	10/6/1965	4/29/1980	100 TON DRY BULK	2500- 2544	GEN ARRANGEMENT	C&O
139-11-585			70-TON DRY BULK	20000- 20024	GEN ARRANGEMENT	PM
139-11-331B			70-TON DRY BULK	20000- 20024	GEN ARRANGEMENT	PM
139-11-504	1/6/1950		70-TON DRY BULK	20025- 20049	GEN ARRANGEMENT	PM
139-11-454	5/23/1947		70-TON DRY BULK	20050- 20149	GEN ARRANGEMENT	PM
139-11-454			70-TON DRY BULK	21100- 21199	GEN ARRANGEMENT	ERIE
139-11-331B	4/14/1941	7/5/1956	70-TON DRY BULK	22000- 220024	GEN ARRANGEMENT	C&O
139-11-585	6/29/1956		70-TON DRY BULK	220000-220024	GEN ARRANGEMENT	C&O
139-11-745	10/2/1967		100 TON DRY BULK	600000-600199	GEN ARRANGEMENT	C&O
139-11-781A	1/6/1970	2/1/1181	70-TON DRY BULK	631100-631299	GEN ARRANGEMENT	C&O
139-11-760	8/20/1968		70-TON DRY BULK	830050-830124	GEN ARRANGEMENT	C&O
139-11-701A	10/6/1965	4/1/2980	100-TON DRY BULK	835000-835154	GEN ARRANGEMENT	C&O

DWG NUMBER	DATE	REV DATE	TYPE CAR	ROAD NUMBERS	DWG TYPE	RR
139-11-846	6/12/1979		100-TON TTX FLAT		GEN ARRANGEMENT	C&O
139-11-384A	1/7/1944	5/15/1946	70-TON FLAT	16500- 16849	GEN ARRANGEMENT	PM
139-11-76C	8/20/1931	4/12/1943	50-TON FLAT	80300- 80399	GEN ARRANGEMENT	C&O
139-11-240A	6/4/1936	3/28/1943	50-TON FLAT	80400 -80474	GEN ARRANGEMENT	C&O
139-11-368A	4/16/1943	6/3/1957	50-TON FLAT	80575- 80624	GEN ARRANGEMENT	C&O
139-11-403A	4/26/1945	9/28/1953	50-TON FLAT	80625- 80724	GEN ARRANGEMENT	C&O
139-11-641	6/14/1961		50-TON FLAT	80631, 80663		
139-11-641			50-TON FLAT	80700, 80702		
139-11-641			50-TON FLAT	80703, 80712		
139-11-339A	9/15/1951	12/3/1942	70-TON FLAT	80900- 80924	GEN ARRANGEMENT	C&O
139-11-367A	4/26/1943	8/6/1943	125-TON FLAT	80950- 80959	GEN ARRANGEMENT	C&O
139-11-366B	4/6/1943	6/28/1957	125 -TON WELL FLAT	80996- 80999	GEN ARRANGEMENT	C&O
139-10-546	9/17/1952		70-TON FLAT	81000- 81249	GEN ARRANGEMENT	C&O
139-11-655	10/23/1962		70-TON FLAT (TOTE)	81000- 81249	GEN ARRANGEMENT	C&O
139-11-797E	8/20/1970	5/21/1982	70-TON WHEEL FLAT	WG226- WG300	GEN ARRANGEMENT	C&O
139-11-614A	12/16/1985	1/6/1959	50- TON TOF FLAT	216514,216517	GEN ARRANGEMENT	C&O
139-11-614A			50-TON TOF FLAT	216564,216625		
139-11-614A			50 TON TOF FLAT	216698,216704		
139-11-614A			50-TON TOF FLAT	216705,216707		
139-11-614A			50 TON TOF FLAT	216712,216716		

DWG NUMBER	DATE	REV DATE	TYPE CAR	ROAD NUMBERS	DWG TYPE	RR
250-10-45A	2/12/1945	8/14/1970	CAR FLOAT	4	GEN ARRANGEMENT	C&O
250-10-63A	2/9/1953	8/14/1970	CAR FLOAT	5	GEN ARRANGEMENT	C&O

DWG NUMBER	DATE	REV DATE	TYPE CAR	ROAD NUMBERS	DWG TYPE	RR
18233	6/15/1925	5/15/1930	MOFW-SLEEPING		GEN ARRANGEMENT	C&O
17979	6/15/1925	12/21/1929	MOFW-DINING		GEN ARRANGEMENT	C&O
18232	6/15/1925	9/22/1931	MOFW-FOREMAN		GEN ARRANGEMENT	C&O
18231	6/15/1925	3/21/1938	MOFW-KITCHEN		GEN ARRANGEMENT	C&O
F-4560	8/1/1915		MOFW SNOWPLOW		GEN ARRANGEMENT	PM
139-11-533	1/7/1952		MOFW-LIVING		GEN ARRANGEMENT	C&O
25785	12/17/1929	3/21/1938	MOFW-CAMP		GEN ARRANGEMENT	C&O
25784	6/19/1929	6/4/1941	MOFW-DINING		GEN ARRANGEMENT	C&O
139-7-564	11/25/1953		MOFW-CAMP	12000	GEN ARRANGEMENT	C&O
139-7-564	11/25/1953		MOFW-2 MAN CAMP	12000- 12169	GEN ARRANGEMENT	C&O
139-11-639	5/8/1961		MOFW-ROADWAY	76C-2	GEN ARRANGEMENT	C&O
204-10-23A	6/11/1959	10/14/1964	MOFW-TIE CAR	CT 1-CT 31	GEN ARRANGEMENT	C&O
139-9-586	10/26/1956		MOFW POWER	PC-101	PROPOSED FLOOR &	C&O
139-11-659	4/4/1963		MOFW-70T-BALLAST	SD-1	GEN ARRANGEMENT	C&O
204-9-26A	9/13/1962	10/8/1963	MOFW-WEED SPRAY	VC-1	GEN ARRANGEMENT	C&O
204-9-29A	1/10/1963	10/9/1963	MOFW-WEED SPRAY	VC-1	HAND BRAKE & END D	C&O



The Chesapeake & Ohio Historical Society
312 E. Ridgeway St.
Clifton Forge, Va. 24422
540-862-2210 - www.cohs.org